



Beacon
Fostering

BEACON FOSTERING

A Foster Carer's
**GUIDE TO TRANSFERING
TO BEACON FOSTERING**

February 2024



Message from Beacon Fostering’s Director.....	01
Introduction.....	02
Excellent Support.....	03
Beacon Therapeutic Support.....	03
Registered office and local support.....	04
Beacon supporting chance.....	05
Support Groups.....	05
Participation, Feedback and Service Development.....	05
Why Choose Beacon Fostering.....	06
Starting your transfer and application here.....	07
Beacon Fostering Referral Scheme.....	09

▶ Message from Beacon Fostering's Director

There is currently over 57,000 children living with foster carers across England. The Fostering Network has estimated that a further 6,000 foster families are needed in the England within 12 months to ensure that all fostered children can be placed with the right family for them.

Sadly, these figures highlight that we are in desperate need to approve more foster carers now more than ever. This is the case across the North West of England also. Beacon Fostering is focused specifically on this region and I am from Preston, Lancashire personally. I am passionate about the doing the best for children and young persons and we would love to support you to help families locally across the North West.

***"At Beacon Fostering we are always here to support you. If you are satisfied please Talk about us
If we can do better please Talk to us"***

We really want you to be involved in our recruitment process and would love for you to engage with potential foster carers. If you have any friends or family that have ever thought about fostering or may even be interested in finding out more, why not recommend Beacon Fostering ? If they are approved , you will even receive a bonus for your recommendation!

We are also hosting virtual Q&A sessions throughout the year that you can also join to learn more about the recruitment and approval of foster carers.

If you know anyone that is interested in becoming a foster carer this would be a great opportunity for them to meet the team and have their questions answered or even begin their fostering journey! If you know someone who is interested in becoming a foster carer or someone who is an approved foster carer and would like to move to Beacon Fostering, please give us a call on 0161 266 2079.

Simon Williams
Director – Beacon Fostering

▶ Introduction

We are very pleased that as an approved or experienced foster carer you are considering continuing your fostering career with Beacon Fostering. We are family focused and privately owned by social workers.

Beacon Fostering started in 2023 and is a leading independent agency based in the North West. The agency has a focus on this area including Manchester, Liverpool, Lancashire and Cumbria.

Children and young persons are at the heart of the agency and we have a strong commitment to achieving positive outcomes and achievements. This is through the dedicated support to all our fostering families and having a family ethos. Every foster parent is part of the Beacon Fostering family and we help out and support each other.

▶ Excellent Support

Please see the summary below of your support from Beacon Fostering if you transfer to the Beacon Family. Our dedicated team will guide you through the process. The document further covers your support, transfer process, carer payment and next steps.



To further support the development of our service Beacon Fostering holds excellent relationships with Local Authorities across the North West.

▶ Beacon Therapeutic Support

We believe that Support is fundamental to successful placements for children and young people and the development of our foster carers. Our Beacon Therapeutic Support includes:

- Access to therapists and professionals
- Extra social worker visits
- Increased foster carer payments and allowances
- Enhanced training
- Additional respite

We provide local support to you through the following:

- Local Social Workers based in the North West
- Local training venues
- Local activities for foster carers, children and young persons
- Local "Meet the Managers" events

Beacon provides enhanced support through therapeutic intervention and access to relevant professionals. The agency supports a range of placements including emergency, respite, short term and long-term.

The agency was established in 2023 with an experienced and skilled team building on achievements and their care for children, young persons and foster carers.

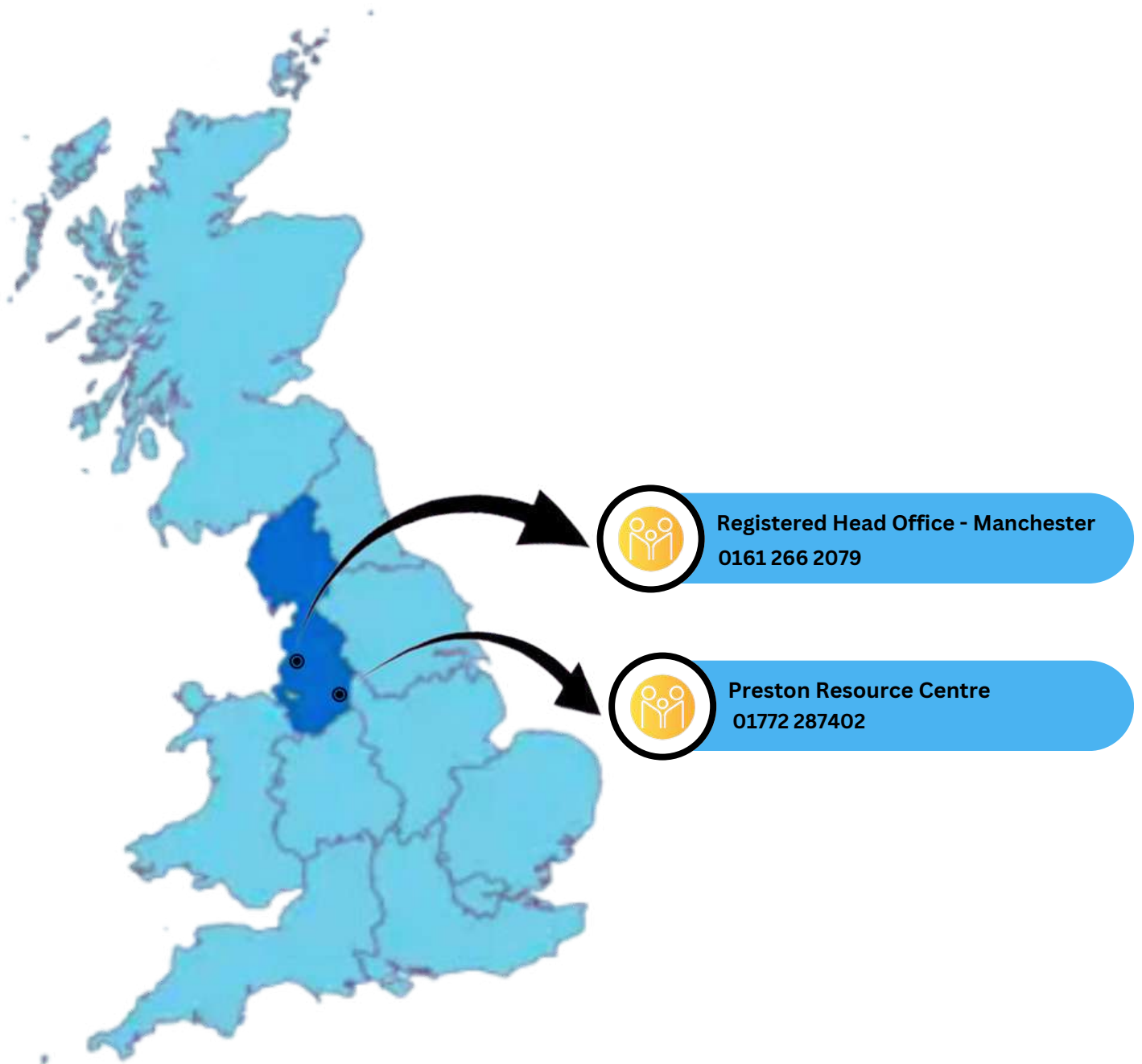


GUIDE TO TRANSFERRING TO BEACON FOSTERING

▶ Registered office and local support

Our head office is based Wythenshawe, South Manchester to provide support to foster carers and children across Manchester, Cheshire and Liverpool. The office is registered with Ofsted.

Beacon Fostering works in partnership with The Fostering Network, Foster Talk and the Nationwide Association of Fostering Providers (NAFP). We ensure that all our foster carers are individual members of Foster Talk.



▶ Beacon Sporting Chance

This is a targeted initiative to promote activities, sport and hobbies for children and young persons. We will seek to provide extra support for each child and young person for them to enjoy sport and participate. Their achievements, fun and engagement will be celebrated. It is not about ability but taking part.

▶ Support Groups

We hold regular local Support groups for Foster Carers throughout the year. We encourage participation in Support Groups, and Foster Carers are supported to take the lead in designing these to meet their needs.

We also hold regular support groups for children and young people, mostly during school breaks. These are led by the Supervising Social workers, there are planned activities for the children and young people, usually, these will be targeted to specific ages so we can ensure that all our children and young people have an opportunity to attend a group, which is relevant to their needs and age.

In addition, we hold a number of events throughout the year including:

- Birth Children Support Groups
- Fun Days
- Day Trips
- Awards Ceremonies
- Training

We continue to build on our comprehensive training programme for foster carers. We understand that our foster carers have different levels of experience and development requirements and therefore we have tailored training, which meets the needs of all levels of experience. Flexible Training weekdays, weekends and through online training courses.

▶ Participation, Feedback and Service Development – Beacon Voice

Feedback is important to us, that's why we encourage feedback from all stakeholders regularly, this ensures that our service is developing, we aim to go above and beyond just meeting the needs of our stakeholders. Foster Carers have daily opportunity to provide feedback, we conduct annual surveys, feedback at reviews and specific events. This approach is through our Beacon Voice together and making sure we secure your feedback.

▶ Why Choose Beacon Fostering

We understand the importance of Foster Carers to be supported effectively financially in caring for children and young people. Our Foster Carers receive clear information regarding all payments and expectations related to the Fostering Allowance. The reward element is competitive and reflects the hard work and dedication our foster carers provide to the children and young people they look after. We are happy to discuss potential financial packages for Foster Carers transferring with children to ensure there is no shortfall in the continued financial support package.

There are a number of reward element incentives for foster carers also, including;

- **Experience and long service**
- **Training completion and development**
- **Annual Holiday contribution**

Beacon is dedicated to providing quality, supportive foster placements to children and young people. We work in partnership with placing authorities and our foster carers to ensure every child or young person placed in our care receives every possible opportunity to develop and grow into successful young adults. We have a persistent focus on achieving the very best outcomes for the children and work as a team to enable them to achieve their full potential.

The work we undertake in regards to monitoring and developing the service ensures that every child and young person's individuality is recognised. We understand that here is no one size fits all approach to caring for children and young people.

Placement endings – We strive to ensure that children and young people receive positive placement endings, this includes being rehabilitated home to their family, moving onto adoptive parents or onto independence or being placed as a supported lodger with their foster carers.



GUIDE TO TRANSFERRING TO BEACON FOSTERING

Beacon Fostering is dedicated to providing quality, supportive foster placements to children and young people. We work in partnership with placing authorities and our foster carers to ensure every child or young person placed in our care receives every possible opportunity to develop and grow into successful young adults. We have a persistent focus on achieving the very best outcomes for the children and work as a team to enable them to achieve their full potential.

The work we undertake in regards to monitoring and developing the service ensures that every child and young person's individuality is recognised. We understand that there is no one size fits all approach to caring for children and young people.

▶ Starting your transfer and application here

Beacon has experienced recruiters for foster carers and supports foster carers who are transferring from other organisations. We understand that this may not be an easy decision for you, which is why we undertake an initial home visit, prior to you making a formal application, we hope that during this visit we can address any concerns you have and provide you with an opportunity to learn more about our organisation, our team, our foster carers and the support and care we provide to you as foster carers. We would also talk about the type of foster children who may potentially be placed with you and the relationship we share with your local authority and surrounding local authorities.

Contact us

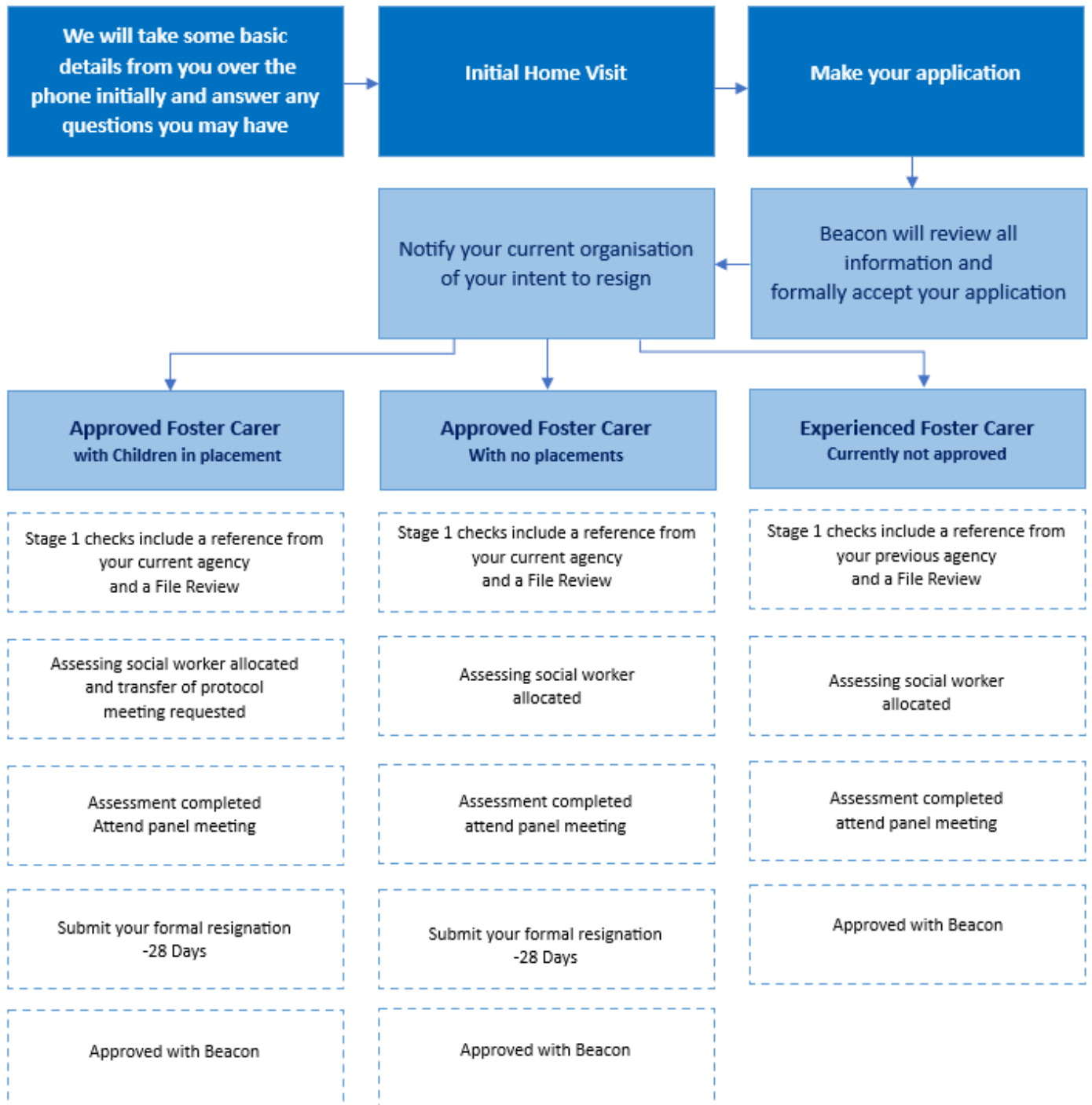
- you can do this via telephone ([0161 266 2079](tel:01612662079))
- through our website online chat



GUIDE TO TRANSFERRING TO BEACON FOSTERING



The below table details the different steps to the application and assessment process:



▶ Beacon Fostering Referral Scheme

The Fostering Network estimates that more than 6,000 foster families are needed across England in the current year. As a foster carer, you do understand the amazing difference you are making to vulnerable children.

We welcome your involvement and if you do recommend new carers to us that are approved, we are pleased to pay the following incentives:

- New to fostering carers -£1,000
- Existing carers without placement -£1,500
- Existing carers with 1 placement -£1,800
- Existing carers with 2 or more placements -£1,950

*Relevant payment is made after the approval and first placement.

If you know anyone who is interested or needs more information, please pass on our details to contact us on **0161 266 2079** or drop us an email at info@beaconfostering.com



► What Foster Carers that have worked with the Beacon team say

"The agency is like a family. I've learned a lot since joining the family. The agency has excellent social workers and a friendly team who are always willing to help foster carers. Special thanks to the directors and managers who gave me an opportunity to serve the community"

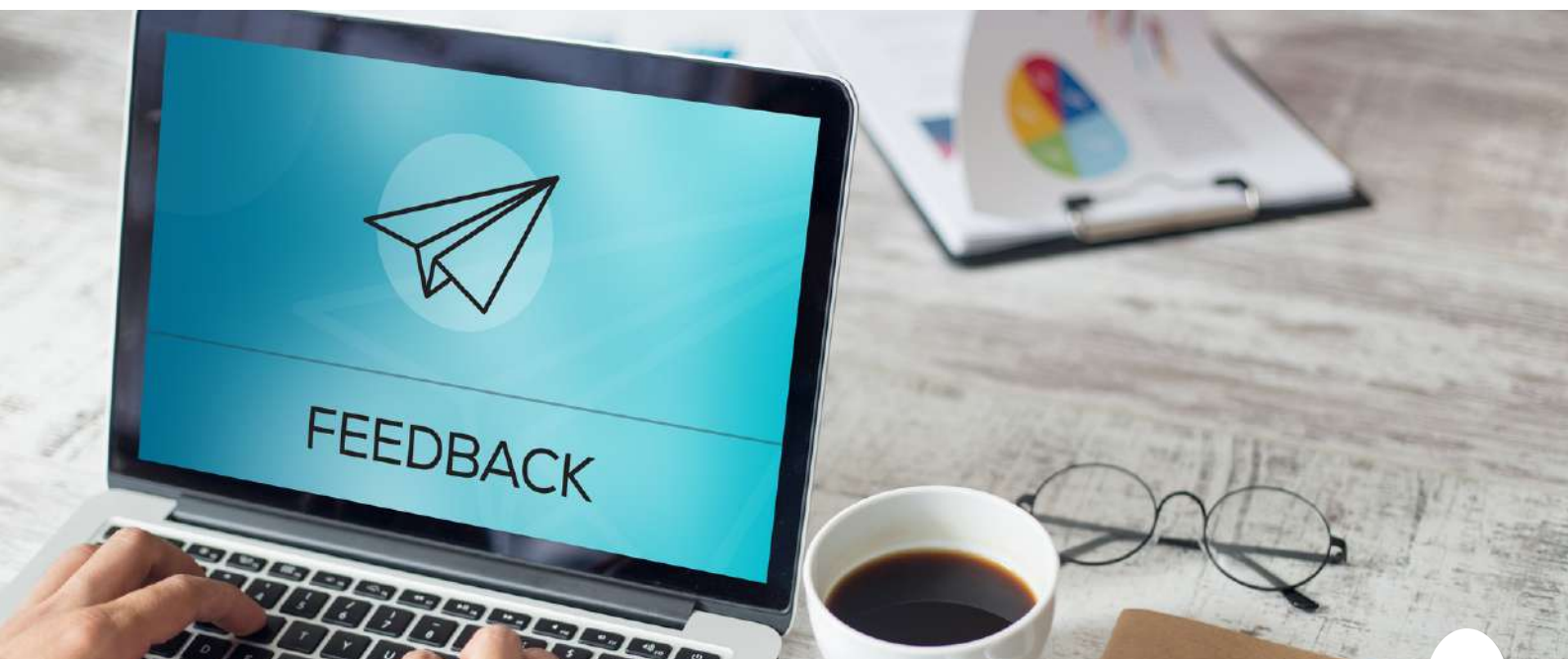
"We are having a great time with the agency. All the staff have always been very helpful. It most definitely is a very progressive company to work with!"

"Thank you for all the help and support over the last few years. Our Social worker have been wonderful and we couldn't have done it without them. We aim to make a difference to any young person that we foster and with the help of professionals from the agency we do"

► What Local Authorities say about the family that Beacon is part of

"We have been working with the agency for a number of years now and we have always found their service to be very professional and friendly. The matching with the Foster Carers and other young people in placement is always very well considered; one of the reasons why so few of our placements breakdown." Local Authority Team Member

"I would like to take this opportunity to thank you for all the support that you not only show to us a local authority but to all of our young people that we place in your care". Local Authority Manager



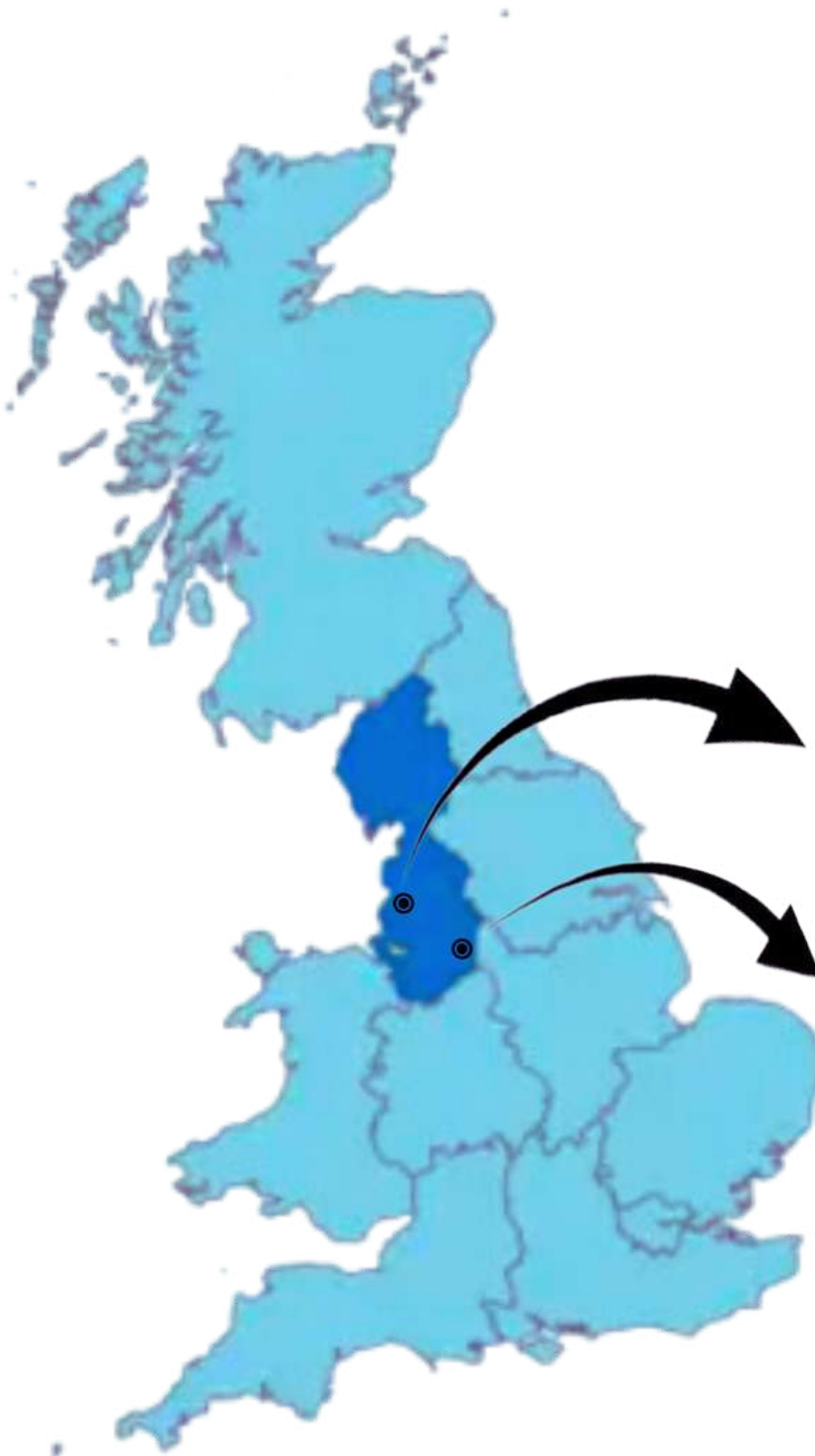
Contact Beacon Fostering

Registered/Head Office address

Beacon Fostering
3000 Aviator Way,
Manchester,
M22 5TG
Tel: 0161 266 2079
Email: info@beaconfostering.com

Resource Centre

Beacon Fostering
Cotton Court Business Centre,
Church Street, Preston,
Lancashire,
PR1 3BY
Tel: 01772 287402
Email: info@beaconfostering.com



Manchester Registered Office
0161 266 2079



Preston Resource Centre
01772 287402

A Foster Carer's Guide to Transferring to Beacon



 **Registered Office**

3000 Aviator Way,
Manchester,
M22 5TG
Tel: 0161 266 2079